

Crookwell 3 Wind Farm

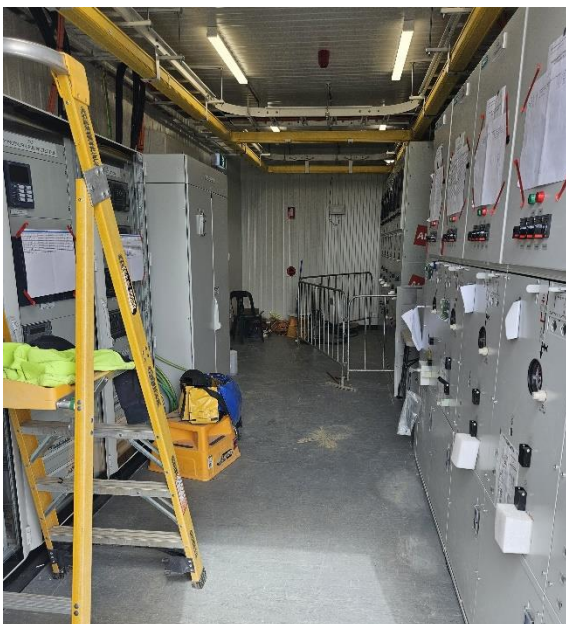
Fortnightly Construction Update

October 11, 2023

General

We have successfully installed 10 wind turbines at Crookwell 3 Wind Farm. With favourable weather conditions on our side, the installation of the last turbine (16) is expected in early November.

Borger Cranes has been doing solid work in the installation of the wind turbines at Crookwell 3 Wind Farm. We appreciate their dedication and expertise in making this project a success.



Wind Farm

Once completed the civil works, Divall's primary responsibilities include maintaining the internal roads and Greywood Sidind Rd. and site compound.

Once the turbines are fully assembled, ARC commences work inside the turbines. Though less visible, these internal installations are crucial for both mechanical and electrical components.

Each turbine requires 2-3 weeks of internal work to ensure they are ready for commissioning.

Grid Connection

The reactive plant, as shown in the image on the left, has arrived from South Australia, where it was manufactured by RJE, and is now successfully installed in the substation, located in Crookwell 2.

This asset is critical to ensure that Crookwell 3 complies with the grid connection requirements.

Additionally, inside the electrical building, five 33 kV breakers and protection panels have been installed.

